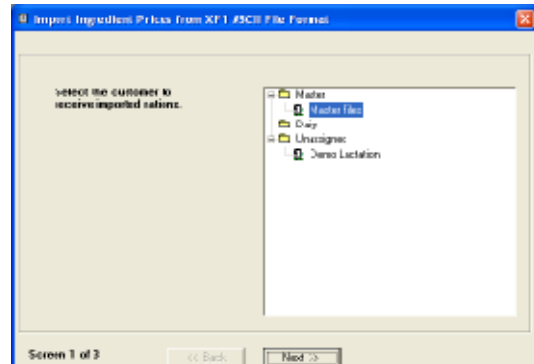


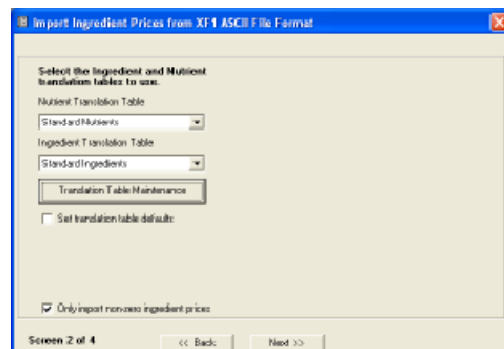


Instructions to Adjust Ingredient External Codes

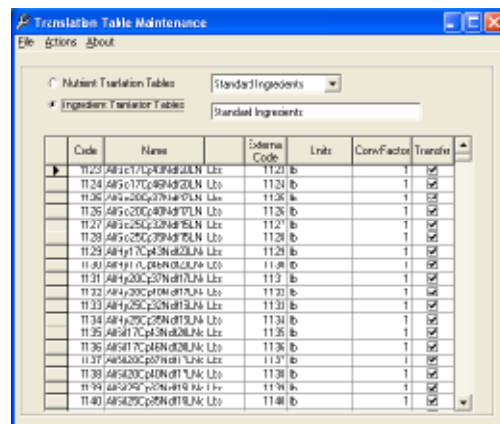
- 1) Go to **File:Import - Ingredients and Prices**



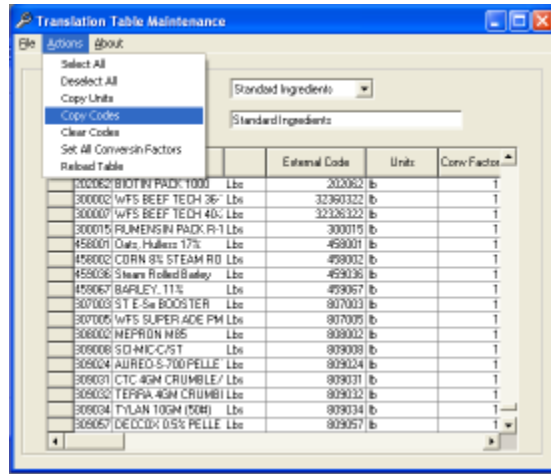
- 2) Click **Next**



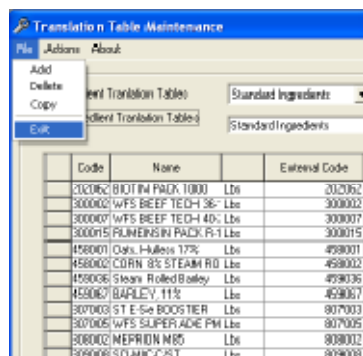
- 3) Click **Translation Table Maintenance**



- 4) Click **Ingredient Translation Tables**
- 5) Go to **"Actions"** and Select **"Copy Codes"**



6) Go “File” then “Exit”



- 7) Click **YES** to save the changes
- 8) Click **Next** and the **Red X** to get out of this section of the program
- 9) Do not do the price import at this time
- 10) Exit the program and restart it.
- 11) Start again with the price import.